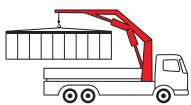


PK 8502 / PK 9002 - EH

High Performance

PALFINGER CRANE



KTU
protected

**Paltronic
50**
controlled

RRC
Radio Remote Control
operated

ISC
Integrated Stability Control
monitored

AOS
Active Oscillation Suppression
inside

The all-rounders with excellent movement geometry

With upwardly tiltable knuckle boom

The PK 8502 stands out by virtue of the upwardly tiltable knuckle boom developed by PALFINGER with the double linkage system (Power Link Plus). As the knuckle boom can be angled upwards through 15°, places which were previously difficult to access can now be easily reached. Thanks to the radio remote control, which is fitted as standard, and in combination with accessories such as grabs and pallet forks the PK 9002 EH becomes a multifunctional working unit.



Universally deployable



Efficiency and comfort at work



Power Link Plus

This knuckle boom, specially developed by PALFINGER which can be angled upwards stands out by virtue of excellent movement geometry. Even in the tightest spaces difficult crane jobs can be performed with precision.



Maintenance-free extension system

With the maintenance-free extension system PALFINGER sets a clear path in easy servicing. The use of sliding elements made of special plastic in combination with the proven KTL cathodic dip painting means that the extension boom system no longer has to be serviced by the operator. This not only saves time and expense but also protects the environment.



Control console

All important information about the crane can be seen on the main control stand. A digital indicator counts and displays the operating hours. Ergonomic control levers and the optional lighting package provide increased safety and comfort even in poor visibility conditions.



Lighting package (optional)

The control stand is supplied on request with LED illumination and backlit symbols. LED warning lights are fitted on the outriggers to provide better visibility.



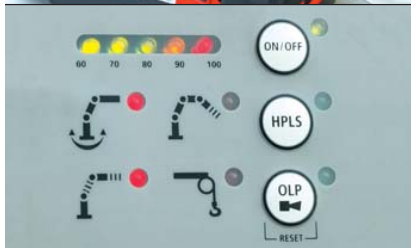
Functional Design

Functional Design elements increase working comfort, protect against damage and make servicing and maintenance easier. The spiral tube hose optimally protects the hydraulic hoses from environmental influences, damage and dirt.



Radio remote control

Radio remote control with digital data transmission (standard on EH models) offers maximum efficiency and comfort. The display integrated in the handset informs the crane operator continuously about the current capacity loading level of the crane.



PALTRONIC 50

Modern electronics in the increasingly complex crane system offers safety and comfort functions which make the crane operator's work easier and increases the efficiency of the crane job.

Innovative technology

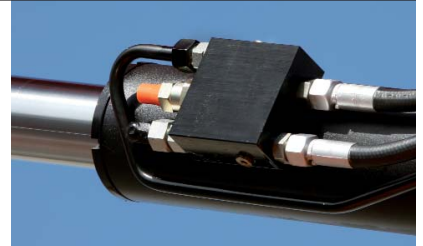
Outrigger system

All the outriggers are fitted as standard with a ball-jointed support plate that can be swivelled through 10°. This enables them to adapt optimally to the ground. The enlarged plate also reduces the pressure on the ground. The PK 8502 and 9002 EH *High Performance* fit onto all standard truck chassis frames. Three outrigger widths are possible: 3.2 m (mechanical), 4.9 m (mechanical or hydraulic) and 5.6 m (hydraulic).



Load-holding valve

They prevent the crane boom from dropping and are fitted as standard on all slewing, lifting, knuckle-boom and extension cylinders. The valves are positioned in such a way that they are protected against damage.



Hose equipment for auxiliary equipment

Hoses providing oil supply for auxiliary equipment are routed in compact trays and protective chains. A clean design offers maximum service life.



Return oil utilisation

The high speed of the extension system is impressive. It results from return oil utilisation, which is installed as standard, and the generously dimensioned hydraulic lines. This increases efficiency in all types of working!



KTL – the cathodic dip painting

The shot-blasted crane parts are covered in zinc phosphate in an immersion process and coated electro-statically. The subsequent two-component top coating of paint provides a surface protection which in the past was usually only found in the automotive industry.



ISC (optional)

The integrated stability control (ISC) is a system that monitors the stability of the crane vehicle. The system adjusts the crane's lifting forces depending on the current stability support situation and the crane boom to ensure the vehicle's stability over the entire working area.



AOS (optional)

The Active Oscillation Suppression system available exclusively from PALFINGER compensates for jolts and sharp stress cycles caused by crane operation. Because oscillations are eradicated the crane can work with precision, much faster and therefore more cost-efficiently.



PK 8502 High Performance

Max. lifting capacities

STD

Max. lifting capacities	5700 kg	12570 lbs
Outreach	Capacity	
hydraulic		
3.7 m	12' 2"	2200 kg 4850 lbs
5.6 m	18' 4"	1460 kg 3220 lbs

A

Max. lifting capacities	5580 kg	12300 lbs
Outreach	Capacity	
hydraulic		
3.8 m	12' 6"	2080 kg 4590 lbs
5.7 m	18' 8"	1360 kg 3000 lbs
7.6 m	24' 11"	1010 kg 2230 lbs

B

Max. lifting capacities	5460 kg	12040 lbs
Outreach	Capacity	
hydraulic		
3.9 m	12' 10"	1960 kg 4320 lbs
5.8 m	19' 0"	1260 kg 2780 lbs
7.7 m	25' 3"	910 kg 2010 lbs
9.7 m	31' 10"	710 kg 1570 lbs
manual		
11.9 m	39' 1"	540 kg 1190 lbs
13.9 m	45' 7"	430 kg 950 lbs

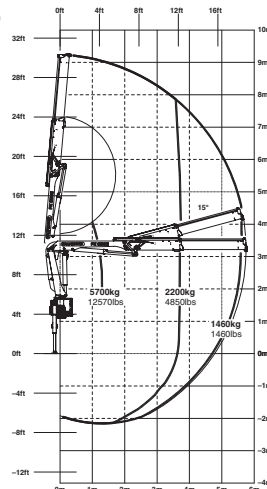
C

Max. lifting capacities	5360 kg	11820 lbs
Outreach	Capacity	
hydraulic		
3.9 m	12' 10"	1860 kg 4100 lbs
5.8 m	19' 0"	1160 kg 2560 lbs
7.7 m	25' 3"	820 kg 1810 lbs
9.8 m	32' 2"	620 kg 1370 lbs
11.8 m	38' 9"	500 kg 1100 lbs
manual		
13.8 m	45' 3"	400 kg 880 lbs
15.8 m	51' 10"	320 kg 710 lbs

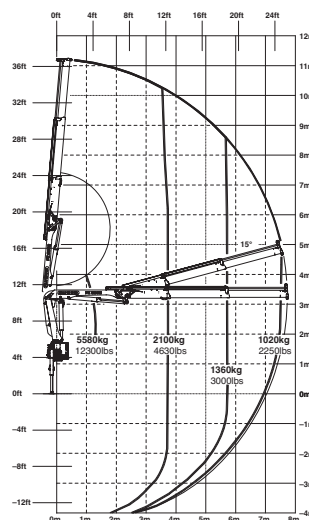
D

Max. lifting capacities	5260 kg	11600 lbs
Outreach	Capacity	
hydraulic		
4.0 m	13' 1"	1760 kg 3880 lbs
5.9 m	19' 4"	1080 kg 2380 lbs
7.8 m	25' 7"	740 kg 1630 lbs
9.9 m	32' 6"	530 kg 1170 lbs
11.9 m	39' 1"	410 kg 900 lbs
13.9 m	45' 7"	340 kg 750 lbs
manual		
16.0 m	52' 6"	270 kg 600 lbs

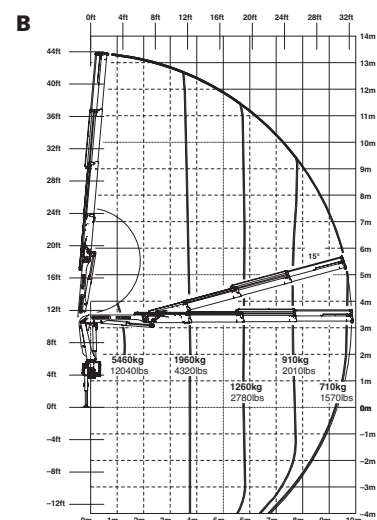
STD



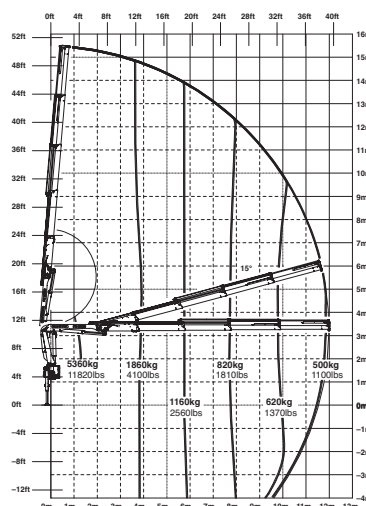
A



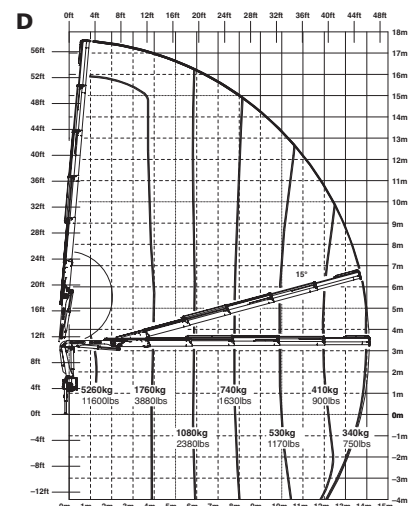
B



C



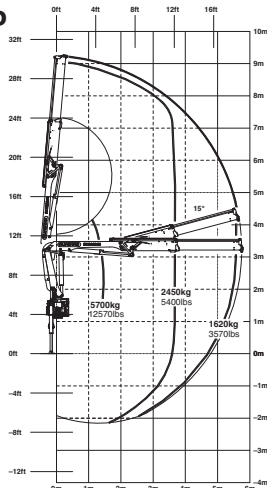
D



The outreaches stated are with a boom angle of 20° and are therefore not the maximum.

PK 9002 EH High Performance

STD



Package model PK 9002 EH:

- E-HPLS
- Paltronic 50
- Radio remote control with LED display
- Danfoss control valve or PVG2000
- 8.5 kW oil cooler
- 100 l oil tank

Max. lifting capacities

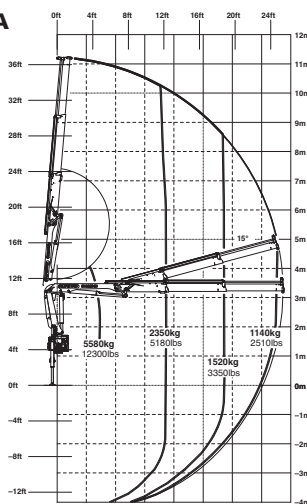
STD

Max. lifting capacities	5700 kg	12570 lbs
Outreach	Capacity	
hydraulic		
3.7 m	12' 2"	2450 kg 5400 lbs
5.6 m	18' 4"	1620 kg 3570 lbs

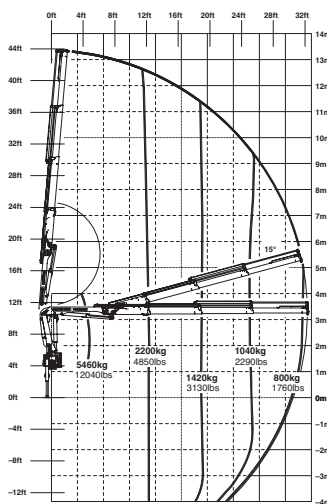
A

Max. lifting capacities	5580 kg	12300 lbs
Outreach	Capacity	
hydraulic		
3.8 m	12' 6"	2350 kg 5180 lbs
5.7 m	18' 8"	1520 kg 3350 lbs
7.6 m	24' 11"	1140 kg 2510 lbs

B



B



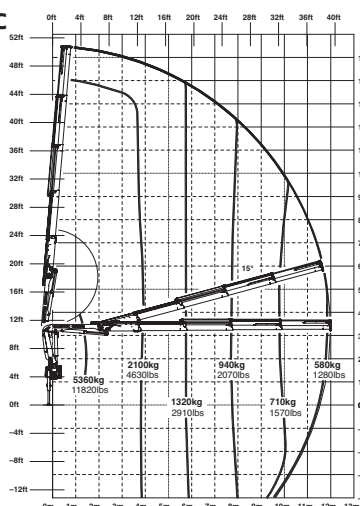
B

Max. lifting capacities	5460 kg	12040 lbs
Outreach	Capacity	
hydraulic		
3.9 m	12' 10"	2200 kg 4850 lbs
5.8 m	19' 0"	1420 kg 3130 lbs
7.7 m	25' 3"	1040 kg 2290 lbs
9.7 m	31' 10"	800 kg 1760 lbs
manual		
11.9 m	39' 1"	620 kg 1370 lbs
13.9 m	45' 7"	500 kg 1100 lbs

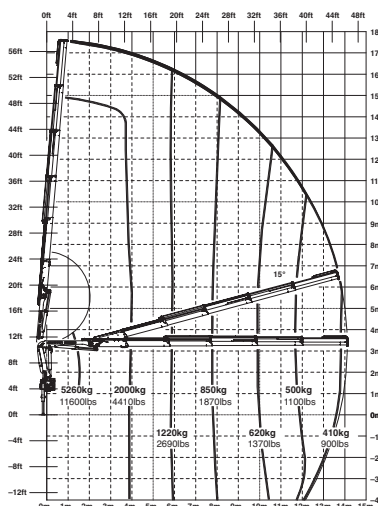
C

Max. lifting capacities	5360 kg	11820 lbs
Outreach	Capacity	
hydraulic		
3.9 m	12' 10"	2100 kg 4630 lbs
5.8 m	19' 0"	1320 kg 2910 lbs
7.7 m	25' 3"	940 kg 2070 lbs
9.8 m	32' 2"	710 kg 1570 lbs
11.8 m	38' 9"	580 kg 1280 lbs
manual		
13.8 m	45' 3"	460 kg 1010 lbs
15.8 m	51' 10"	380 kg 840 lbs

C



D



D

Max. lifting capacities	5260 kg	11600 lbs
Outreach	Capacity	
hydraulic		
4.0 m	13' 1"	2000 kg 4410 lbs
5.9 m	19' 4"	1220 kg 2690 lbs
7.8 m	25' 7"	850 kg 1870 lbs
9.9 m	32' 6"	620 kg 1370 lbs
11.9 m	39' 1"	500 kg 1100 lbs
13.9 m	45' 7"	410 kg 900 lbs
manual		
16.0 m	52' 6"	330 kg 730 lbs

Strong and flexible

KP-HB59002EM1+E
E 05/09, K 05/09, D 05/09

PK 8502 High Performance

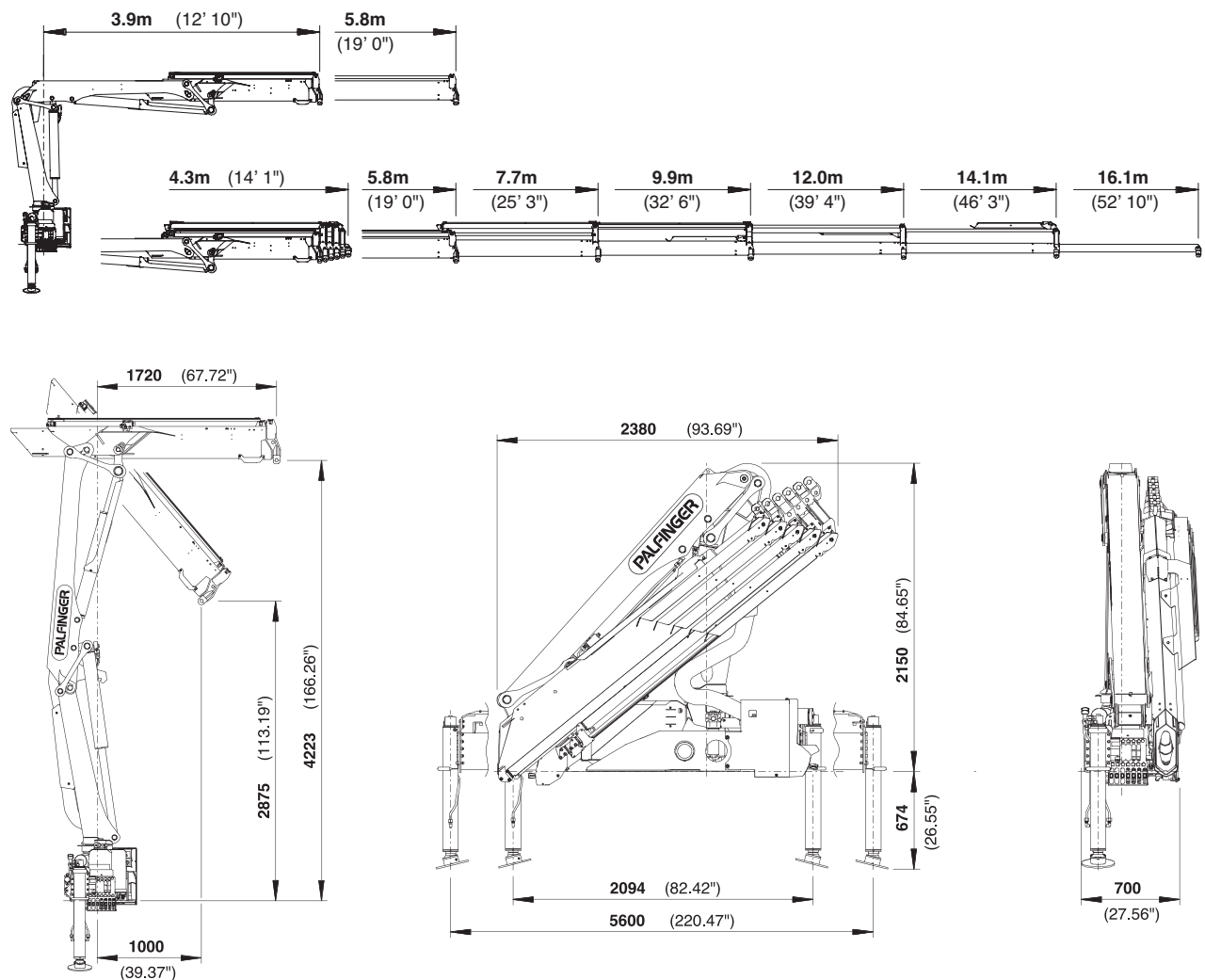
Technical Specifications (EN 12999 H1-B3)

Max. lifting moment	8.2 mt/80.4 kNm	59330 ft.lbs
Max. lifting capacity	5700 kg/55.9 kN	12570 lbs
Max. hydraulic outreach	14.1 m	46' 3"
Max. manual outreach	16.1 m	52' 10"
Slewing angle	400°	
Slewing torque	1.0 mt/9.8 kNm	7240 ft.lbs
Stabilizer spread	std. 3.2 m/10' 6"	max. 5.6 m/18' 4"
Fitting space required (std.)	0.70 m	2' 4"
Width folded	2.33 m	7' 8"
Max. operating pressure	320 bar	4640 psi
Recommended pump capacity	from 25 l/min	6.6 US gal./min
	to 35 l/min	9.2 US gal./min
Dead weight (std.)	1044 kg	2300 lbs

PK 9002 EH High Performance

Technical Specifications (EN 12999 H1-B3)

Max. lifting moment	9.1 mt/89.3 kNm	65840 ft.lbs
Max. lifting capacity	5700 kg/55.9 kN	12570 lbs
Max. hydraulic outreach	14.1 m	46' 3"
Max. manual outreach	16.1 m	52' 10"
Slewing angle	400°	
Slewing torque	1.0 mt/9.8 kNm	7240 ft.lbs
Stabilizer spread	std. 3.2 m/10' 6"	max. 5.6 m/18' 4"
Fitting space required (std.)	0.70 m	2' 4"
Width folded	2.33 m	7' 8"
Max. Betriebsdruck	350 bar	5075 psi
Recommended pump capacity	from 40 l/min	10.6 US gal./min
	to 50 l/min	13.2 US gal./min
Dead weight (std.)	1069 kg	2360 lbs



www.palfinger.com

Applications shown in the leaflet do not always correspond to the standard specifications. Design and specification are subject to change without prior notice. Dimensions may vary. Subject to technical changes, errors and translation mistakes.

*1) Optional features