

PK 13002 / PK 14002 - EH

High Performance

PALFINGER CRANE



Power Link Plus. Flexibility at its best.

The PK 13002 *High Performance* has an impressively wide performance range. Used in the municipal sector, for transporting building materials or in classic unit load handling, it demonstrates its high level of flexibility and reliability on a daily basis. The PK 14002 EH *High Performance* is impressive in its class due to innovative technology, functional design and equipment features that define today's state-of-the-art truck-mounted crane.



Crane performance at the highest level



A synergy of function and design



Power Link Plus

This knuckle boom, specially developed by PALFINGER which can be angled upwards stands out by virtue of excellent movement geometry. Even in the tightest spaces difficult crane jobs can be performed with precision.



Maintenance-free extension system

With the maintenance-free extension system PALFINGER sets a clear path in easy servicing. The use of sliding elements made of special plastic in combination with the proven KTL cathodic dip painting means that the extension boom system no longer has to be serviced by the operator. This not only saves time and expense but also protects the environment.



Control console

All important information about the crane can be seen on the main control stand. A digital indicator counts and displays the operating hours. Ergonomic control levers and the optional lighting package provide increased safety and comfort even in poor visibility conditions.



Functional Design

Functional Design elements increase working comfort, protect against damage and make servicing and maintenance easier. The spiral tube hose optimally protects the hydraulic hoses from environmental influences, damage and dirt. Thanks to the patented interlock system, the crane is equipped with an innovative outrigger safety system for manual stabilizer supports.



Lighting package (optional)

The control stand is supplied on request with LED illumination and backlit symbols. LED warning lights are fitted on the outriggers to provide better visibility.

Outstanding power to weight ratio

Outrigger system

All the outriggers are fitted as standard with a ball-jointed support plate that can be swivelled through 10°. This enables them to adapt optimally to the ground. The enlarged plate also reduces the pressure on the ground. Three outrigger widths are available: 5.0 m, 16' 5" (mechanical), 5.6 m, 18' 4" (mechanical or hydraulic) and 6.6 m, 21' 8" (hydraulic). The crane's stabilizer cylinders can be pivoted fully hydraulically upwards through 180° (optional equipment).



Load-holding valve

They prevent the crane boom from dropping and are fitted as standard on all slewing, lifting, knuckle-boom and extension cylinders. The valves are positioned in such a way that they are protected against damage.



Hose equipment for auxiliary equipment

Hoses providing oil supply for auxiliary equipment are routed in compact trays and protective chains. A clean design offers maximum service life. There is also an optional solution with hose drum on the main boom with the hoses guided on the inside in the extension system for protection.



Return oil utilisation

The high speed of the extension system is impressive. It results from return oil utilisation, which is installed as standard, and the generously dimensioned hydraulic lines. This increases efficiency in all types of applications!



KTL – the cathodic dip painting

The shot-blasted crane parts are covered in zinc phosphate in an immersion process and coated electro-statically. The subsequent two-component top coating of paint provides a surface protection which in the past was usually only found in the automotive industry.



PK 13002 High Performance

Max. lifting capacities

A

Max. lifting capacities	6100 kg	13440 lbs
Outreach	Capacity	
hydraulic		
3.9 m	12' 10"	2950 kg 6500 lbs
5.9 m	19' 4"	1900 kg 4200 lbs
7.9 m	25' 11"	1400 kg 3100 lbs

B

Max. lifting capacities		6000 kg	13200 lbs
Outreach		Capacity	
hydraulic			
4.0 m	13' 1"	2800 kg	6100 lbs
6.0 m	19' 8"	1760 kg	3900 lbs
8.0 m	26' 3"	1280 kg	2850 lbs
10.1 m	33' 2"	1000 kg	2200 lbs
12.4 m	40' 8"	740 kg	1630 lbs
14.6 m	47' 11"	570 kg	1260 lbs

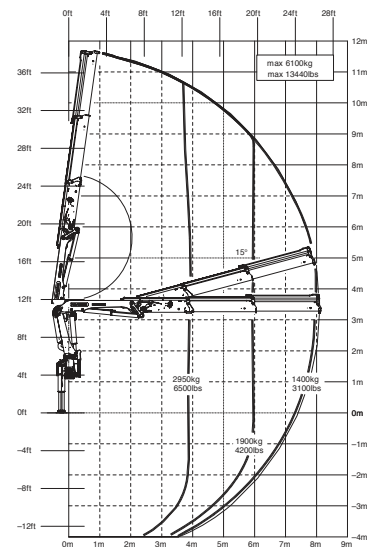
C

Max. lifting capacities		5850 kg	12890 lbs
Outreach		Capacity	
hydraulic			
4.1 m	13' 5"	2650 kg	5900 lbs
6.1 m	20' 0"	1660 kg	3650 lbs
8.1 m	26' 7"	1180 kg	2600 lbs
10.2 m	33' 6"	890 kg	1960 lbs
12.4 m	40' 8"	730 kg	1600 lbs
14.6 m	47' 11"	560 kg	1240 lbs
16.8 m	55' 1"	440 kg	970 lbs

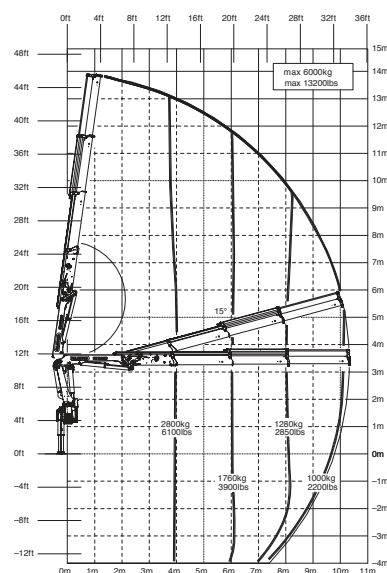
D

Max. lifting capacities		5750 kg	12670 lbs
Outreach		Capacity	
hydraulic			
4.2 m	13' 9"	2550 kg	5600 lbs
6.2 m	20' 4"	1560 kg	3450 lbs
8.2 m	26' 11"	1080 kg	2400 lbs
10.3 m	33' 10"	800 kg	1760 lbs

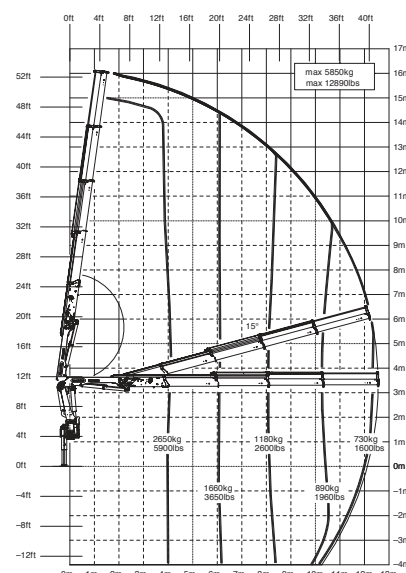
A



B

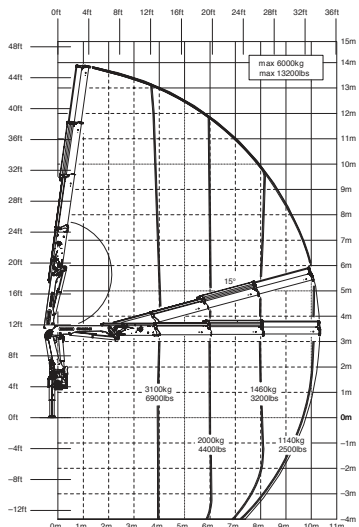


C



PK 14002 EH High Performance

B



Package model PK 14002 EH:

- E-HPLS
- Paltronic 50
- Radio remote control with LED display
- Danfoss control valve or PVG2000
- 8.5 kW oil cooler
- 140 l oil tank

Max. lifting capacities

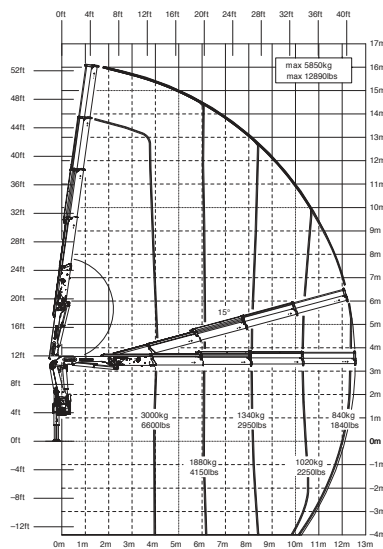
A

Max. lifting capacities	6100 kg	13440 lbs
Outreach	Capacity	
hydraulic		
3.9 m	12' 10"	3250 kg 7200 lbs
5.9 m	19' 4"	2150 kg 4700 lbs
7.9 m	25' 11"	1580 kg 3500 lbs

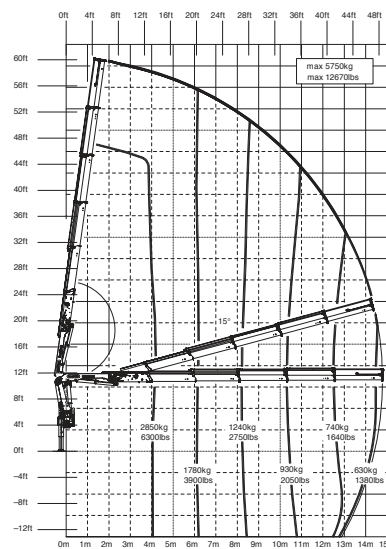
B

Max. lifting capacities	6000 kg	13200 lbs
Outreach	Capacity	
hydraulic		
4.0 m	13' 1"	3100 kg 6900 lbs
6.0 m	19' 8"	2000 kg 4400 lbs
8.0 m	26' 3"	1460 kg 3200 lbs
10.1 m	33' 2"	1140 kg 2500 lbs
12.4 m	40' 8"	860 kg 1900 lbs
14.6 m	47' 11"	670 kg 1480 lbs

C



D



C

Max. lifting capacities	5850 kg	12890 lbs
Outreach	Capacity	
hydraulic		
4.1 m	13' 5"	3000 kg 6600 lbs
6.1 m	20' 0"	1880 kg 4150 lbs
8.1 m	26' 7"	1340 kg 2950 lbs
10.2 m	33' 6"	1020 kg 2250 lbs
12.4 m	40' 8"	840 kg 1840 lbs
14.6 m	47' 11"	660 kg 1460 lbs
16.8 m	55' 1"	530 kg 1170 lbs

D

Max. lifting capacities	5750 kg	12670 lbs
Outreach	Capacity	
hydraulic		
4.2 m	13' 9"	2850 kg 6300 lbs
6.2 m	20' 4"	1780 kg 3900 lbs
8.2 m	26' 11"	1240 kg 2750 lbs
10.3 m	33' 10"	930 kg 2050 lbs

Inspirational efficiency and profitability

KP-H13/14002EM1+E
E 11/10, K 11/10, D 11/10

PK 13002 High Performance

Technical Specifications (EN 12999 HC1 HD4/B3)

Max. lifting moment	12.0 mt / 117.7 kNm	86780 ft.lbs
Max. lifting capacity	6200 kg / 60.8 kN	13670 lbs
Max. hydraulic outreach	17.0 m	55' 9"
Max. manual outreach	19.0 m	62' 4"
Sewing angle	420°	
Sewing torque	1.6 mt / 15.7 kNm	11580 ft.lbs
Stabilizer spread	std. 5.0 m / 16' 5"	max. 6.6 m / 21' 8"
Fitting space required (std.)	0.83 m	2' 9"
Width folded	2.51 m	8' 3"
Max. operating pressure	320 bar	4640 psi
Recommended pump capacity	from 35 l/min	9.2 US gal./min
	to 50 l/min	13.2 US gal./min
Dead weight (std.)	1764 kg	3890 lbs

PK 14002 EH High Performance

Technical Specifications (EN 12999 HC1 HD4/B3)

Max. lifting moment	13.4 mt / 131.0 kNm	96590 ft.lbs
Max. lifting capacity	6200 kg / 60.8 kN	13670 ft.lbs
Max. hydraulic outreach	17.0 m	55' 9"
Max. manual outreach	19.0 m	62' 4"
Outreach (+ fly jib)	23.0 m	75' 6"
Sewing angle	420°	
Sewing torque	1.6 mt / 15.7 kNm	11580 ft.lbs
Stabilizer spread	std. 5.0 m / 16' 5"	max. 6.6 m / 21' 8"
Fitting space required (std.)	0.83 m	2' 9"
Width folded	2.51 m	8' 3"
Max. operating pressure	350 bar	5075 psi
Recommended pump capacity	from 50 l/min	13.2 US gal./min
	to 70 l/min	18.5 US gal./min
Dead weight (std.)	1789 kg	3940 lbs

