

# PK 12502 SH

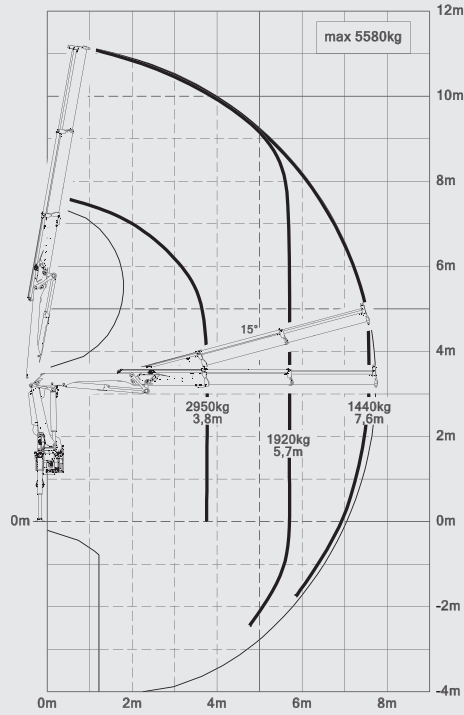
**PALFINGER**  
LIFETIME EXCELLENCE

**HIGH VARIETY OF USES GUARANTEES  
HIGHEST EFFICIENCY, DURING THE  
CRANE'S ENTIRE LIFETIME.**

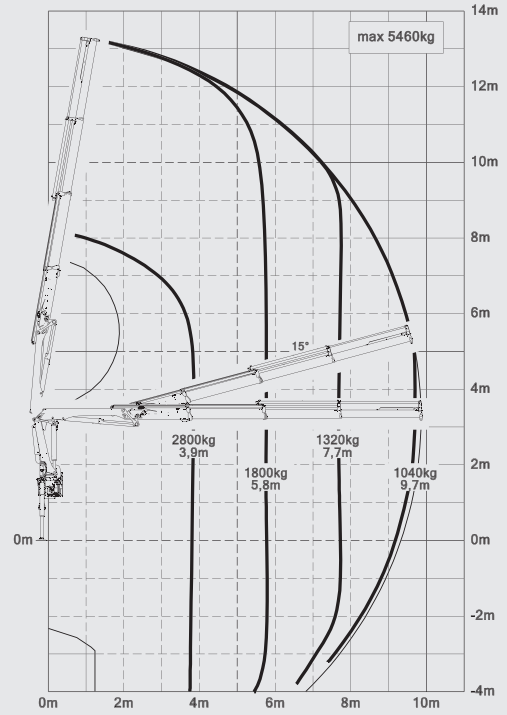


# PK 12502 SH HIGH PERFORMANCE

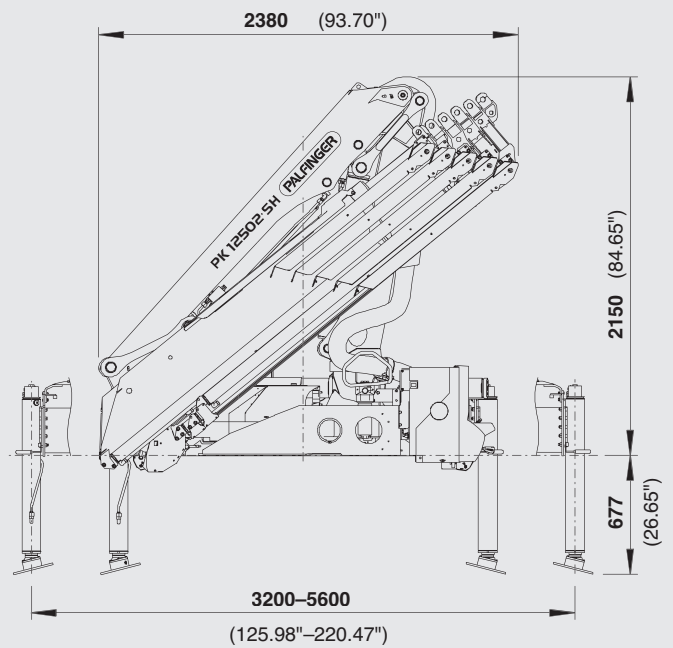
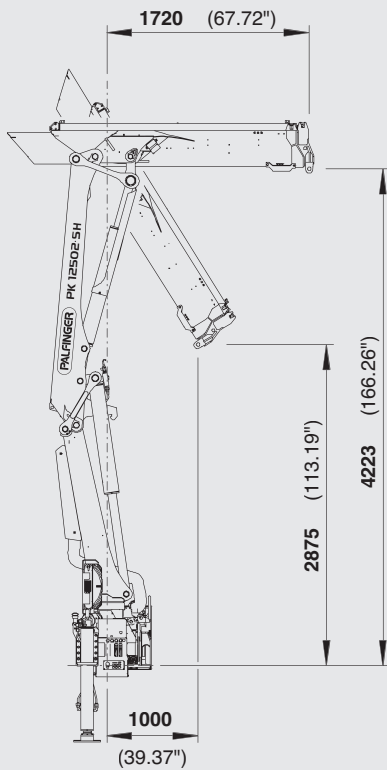
**A**



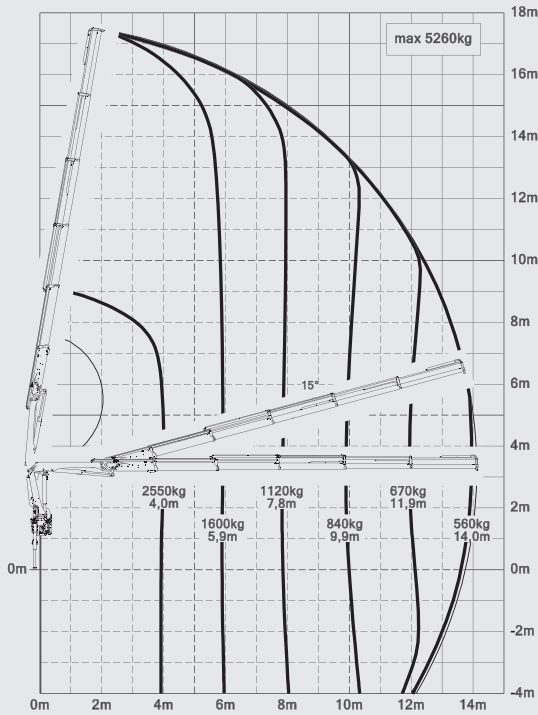
**B**



## DIMENSIONS



D

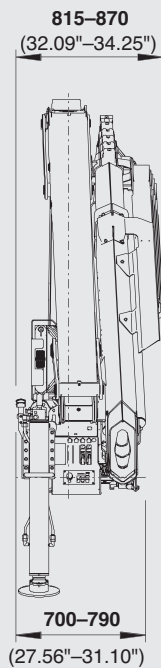


- Higher payloads due to intelligent lightweight design
- More lifting power due to S-HPLS
- Additional applications due to Power Link Plus
- Practical and attractive due to Functional Design
- High value retention due to KTL coating



### TECHNICAL SPECIFICATIONS (EN 12999 HC1 HD5/B3)

Max. lifting moment	11.4 mt/112.0 kNm	82600 ft. lbs
Max. lifting capacity	5700 kg/55.9 kN	12570 lbs
Max. hydraulic outreach	14.1 m	46' 3"
Max. manual outreach	16.1 m	52' 10"
Slewing angle	400°	
Slewing torque	1.3 mt/12.7 kNm	9370 ft.lbs
Stabilizer spread	std. 3.2 m/10' 6"	max. 5.6 m/18' 4"
Fitting space required (std.)	0.70 m	2' 4"
Width folded	2.38 m	7' 10"
Max. operating pressure	365 bar	5293 psi
Recommended pump capacity	from 45 l/min	11.9 US gal./min
	to 60 l/min	15.9 US gal./min
Dead weight (std.)	1160 kg	2557 lbs



\* Optional features / country-specific equipment

**PALFINGER LOADER CRANES ARE CONVINCING DUE TO THEIR SUPERIOR LIFE-CYCLE PERFORMANCE. THEY ARE THE MOST ECONOMICAL AND ALSO THE MOST RELIABLE OVER THE ENTIRE PRODUCT LIFE. FROM SOLUTION FINDING TO RESALE.**

➤ BETTER SOLUTIONS

➤ HIGHER VALUE RETENTION

➤ BETTER EFFICIENCY

➤ BETTER ECOLOGY



➤ BETTER ERGONOMICS

LIFETIME EXCELLENCE

➤ HIGHER SERVICEABILITY

➤ HIGHER AVAILABILITY

➤ MORE RELIABILITY

For further information please visit: [www.palfinger.com/thebrand](http://www.palfinger.com/thebrand)